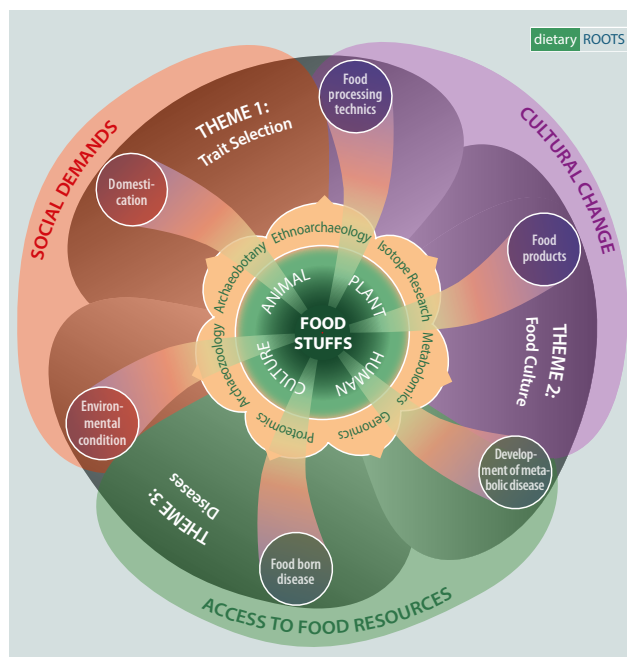


# Dietary ROOTS – Symposium on “Ancient Plant Genomics”

By integrating archaeological and biomolecular techniques, Dietary ROOTS investigates how ancient subsistence practices were reciprocally influenced by both environmental and social factors (e.g. climate, land-use, social hierarchies, and worldviews). Determining the origins of foodstuffs and uncovering how cultural practices and connectivities shape dietary intake is key to diagnosing the relationship between dietary changes, animal, human and plant phenotypes, and diseases. This symposium is centred around ancient plant cultivars and plant domestication and deals with the co-evolutionary dynamics between trait selection in plants during domestication by humans, subsistence practices, economic goals and social demands.

**Tuesday, 5 November 2019 / 10-12 a.m. / Leibnizstr. 3 / Room 123**

- 10:00-10:45 a.m. **Harriet Hunt, Cambridge:**  
“New insight into ancient plant genomics” (prelim. title)
- 10:45-11:30 a.m. **Hsiao-Lei Liu, Warwick:**  
“Ancient DNA insights into human-plant interaction”



5 November 2019 / Kiel University / Leibnizstr. 3 / Room 123 / 24118 Kiel